



**BELONG, *believe*, ACHIEVE**  
**PERTHYN, CREDU, LLWYDDO**

**Governors' Annual  
Report to Parents  
Autumn 2018**

## **Contents**

<b>Page 3</b>	<b>Introduction from the Chair of Governors</b>
<b>Page 4</b>	<b>Full Details of the members of the Governing Body</b>
<b>Page 5</b>	<b>Key Stage 3 Comparative Data</b>
<b>Page 6</b>	<b>Summary of Secondary School Performance</b>
<b>Page 9</b>	<b>Provision for Sport</b>
<b>Page 11</b>	<b>Destination of School Leavers</b>
<b>Page 12</b>	<b>Full Financial Statement</b>
<b>Page 13</b>	<b>Steps taken by the Governing Body to strengthen links with the community</b>
<b>Page 18</b>	<b>Term Dates &amp; INSET dates</b>
<b>Page 19</b>	<b>Summary of changes to school prospectus</b>
<b>Page 19</b>	<b>The use of Welsh language in the school by pupils of all age groups</b>
<b>Page 20</b>	<b>Language Categories</b>
<b>Page 21</b>	<b>School Toilet Facilities</b>

## **Introduction from the Chair of Governors**

Another year has passed at Willows and there are another host of reasons for us all to be very proud of the school. Not just exam results, where the school again outperformed all expectations, but the attitude of the pupils and the place of the school in our community.

I would like to thank all the staff at the school who had the additional headache of an Estyn report this year, the improvement tracked by that report is another source of pride.

The council has announced that Willows will be getting a new building as part of the 21<sup>st</sup> Century Schools programme. As we head towards this new beginning for the school, we have the best people in charge to make the most of it. Let's all look forward to another exciting year at Willows High and be proud of all the school has achieved.

Thank you.

Ed Stubbs

Chair of Governors

## Full Details of the members of the Governing Body

Name	Position
Edward Stubbs	Chair of Governors (LA)
Adrian Ford	Vice Chair of Governors (Parent)
Chris Norman	Headteacher Governor
Jason Clark	Community Governor
Alan Corson	Community Governor
Joe Redmond	Community Governor
Richard Strudwick	Community Governor
Lynne Thomas	Community Governor
Karen Dummett	Local Authority Governor
Camilla Lovelace	Local Authority Governor
Huw Thomas	Local Authority Governor
Su Wade	Local Authority Governor
Fiona Hewett	Parent Governor
Teresa James	Parent Governor
Rodica-Mihaela Patrascu	Parent Governor
Sarah Stevens	Parent Governor
Carly Southern	Teacher Governor
Gareth Ritter	Teacher Governor
Natalie Kendrick-Doyle	Staff Governor
Debbie Davies	Clerk to the Governors

## Key Stage 3 Comparative Data Report (Core Subjects)

Summary of National Curriculum Assessment results of pupils in the school (2018) and nationally (2017) at the end of Key Stage 3 as a percentage of those eligible for assessment.

		N	D	NCO 1,2,&3	1	2	3	4	5	6	7	>= 8	5+
English	School	0	0	0	0	0	8	13	26	36	14	0	76
	National	0.2	0.3	-	0.4	0.6	1.8	6.0	31.8	38.0	19.0	1.7	90.5
Oracy	School	0	0	0	0	0	9	13	22	36	17	0	75
	National	0.2	0.3	-	0.4	0.6	1.7	6.9	31.0	37.3	19.1	2.3	89.6
Reading	School	0	0	0	0	0	9	11	25	38	14	0	76
	National	0.2	0.3	-	0.4	0.7	1.8	7.4	31.6	37.4	18.0	1.8	88.9
Writing	School	0	0	0	0	1	7	22	41	20	6	0	67
	National	0.2	0.3	-	0.4	0.7	2.3	11.3	33.8	34.0	15.3	1.5	84.5
Mathematics	School	0	0	0	0	6	6	14	32	20	19	0	72
	National	0.2	0.2	-	0.4	0.6	1.9	5.6	25.4	34.7	26.8	3.9	90.8
Science	School	0	0	0	0	0	14	7	61	10	5	0	76
	National	0.3	0.3	-	0.4	0.4	1.0	3.9	28.0	39.1	25.0	1.5	93.5

## Key Stage 3 Comparative Data Report (Non-Core Subjects)

Summary of National Curriculum Assessment results of pupils in the school (2018) and nationally (2017) at the end of Key Stage 3 as a percentage of those eligible for assessment.

		N	D	NCO 1,2,&3	1	2	3	4	5	6	7	>= 8	5+
Welsh Second Language	School	0	0	0	0	0	7	7	47	25	14	0	86
	National	1.2	1.4	-	0.6	0.7	2.8	9.0	35.4	33.1	14.5	0.8	83.8
Modern Foreign Language	School	0	0	0	0	2	7	11	47	20	9	0	76
	National	1.1	1.8	-	0.5	0.6	2.0	7.1	31.3	36.6	18.0	0.7	86.7
Design & Technology	School	0	0	0	0	0	6	16	66	9	0	0	75
	National	0.5	0.3	-	0.3	0.4	0.9	4.0	30.8	43.1	18.5	0.8	93.3
ICT	School	0	0	0	0	0	7	18	39	22	11	0	72
	National	0.5	0.3	-	0.3	0.4	0.9	3.5	27.1	43.9	22.1	0.7	93.9
History	School	0	0	0	0	0	8	25	35	26	2	0	64
	National	0.6	0.3	-	0.3	0.5	1.0	5.0	28.9	38.9	22.0	2.1	91.9
Geography	School	0	0	0	0	1	15	13	55	14	0	0	68
	National	0.6	0.3	-	0.3	0.5	1.0	5.0	29.6	38.2	21.6	2.5	92.0
Art & Design	School	0	0	0	0	0	0	8	74	15	0	0	89
	National	0.5	0.3	-	0.2	0.4	0.8	3.7	31.3	39.4	20.4	2.5	93.6
Music	School	0	0	0	0	0	5	7	64	22	0	0	85
	National	0.7	0.4	-	0.5	0.3	0.6	3.9	35.7	41.5	13.9	2.2	93.3
PE	School	0	0	0	0	0	5	11	64	16	1	0	81
	National	0.6	0.4	-	0.3	0.3	0.7	4.2	35.7	39.6	16.1	1.9	93.3

D represents pupils who have been disapplied under sections 113 - 116 of the 2002 Education Act, or pupils for whom teachers were unable to provide an assessment.

N represents pupils not awarded a level for reasons other than disapplication.

National Curriculum Outcomes 1, 2 and 3 describe achievements below level 1.

The general expectation is that the majority of 14 year olds will attain level 5.

The Core Subject Indicator represents the percentage of pupils achieving level 5 or above in English or Welsh (first language), mathematics and science in combination.

## Summary of Secondary School Performance

Welsh Government Expected Performance for this year's cohort for the Level 2+ indicator (at least a grade C or above in English, Mathematics and three others) was 32%.

### 0.2a L2 inc E/W & M

Title	2011/12	2012/13	2013/14	2014/15	2015/16	2016/17	2017/18
1. % achieving	28.2	38.8	49.7	48.9	52.8	39.2	43.9
2. % modelled	24.2	28.5	30.7	33.4	38.7	28.0	31.8
3. Difference (% achieving - % modelled)	4.0	8.4	18.9	13.5	16.1	11.2	12.1

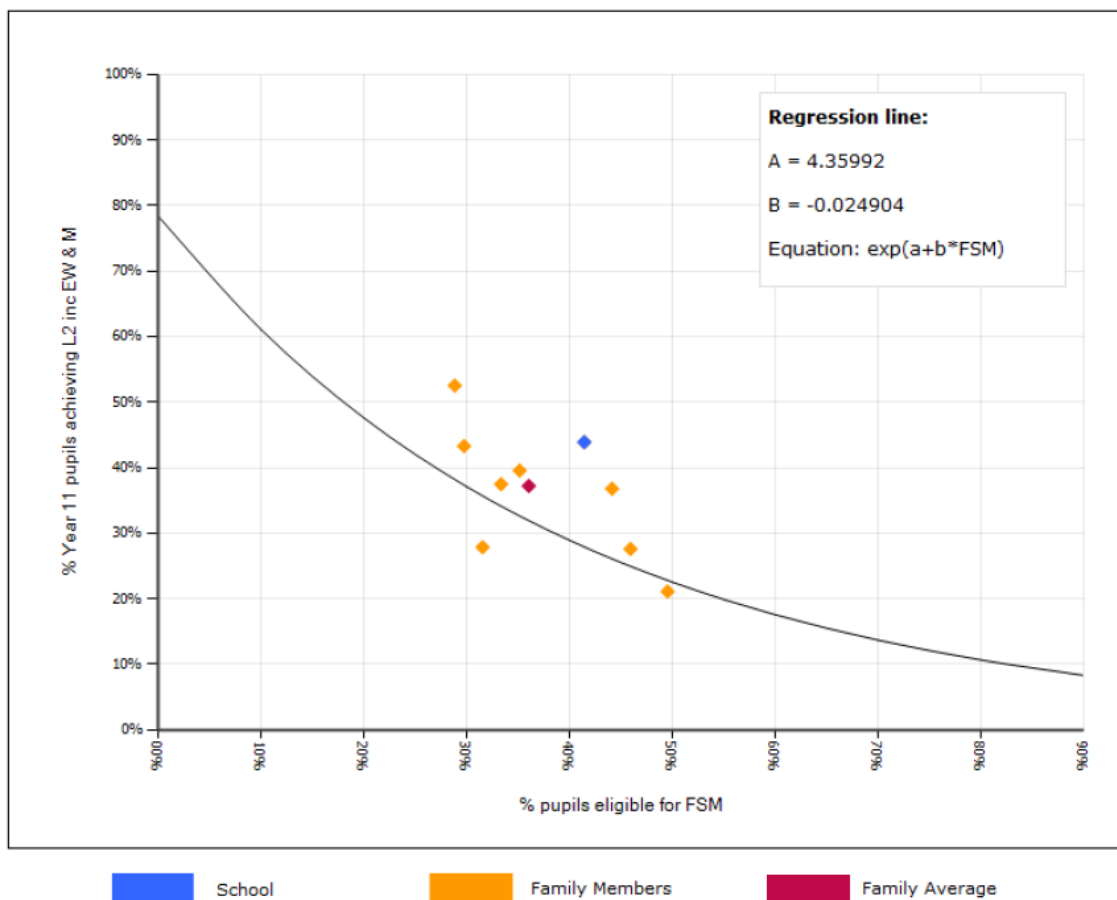
Pupils in year 11 have achieved a 44% at level 2+ (5% up from last year) well above what was expected of the cohort based on the attainment of pupils when they entered Willows.

## Section 0 - Summary

[Home](#)

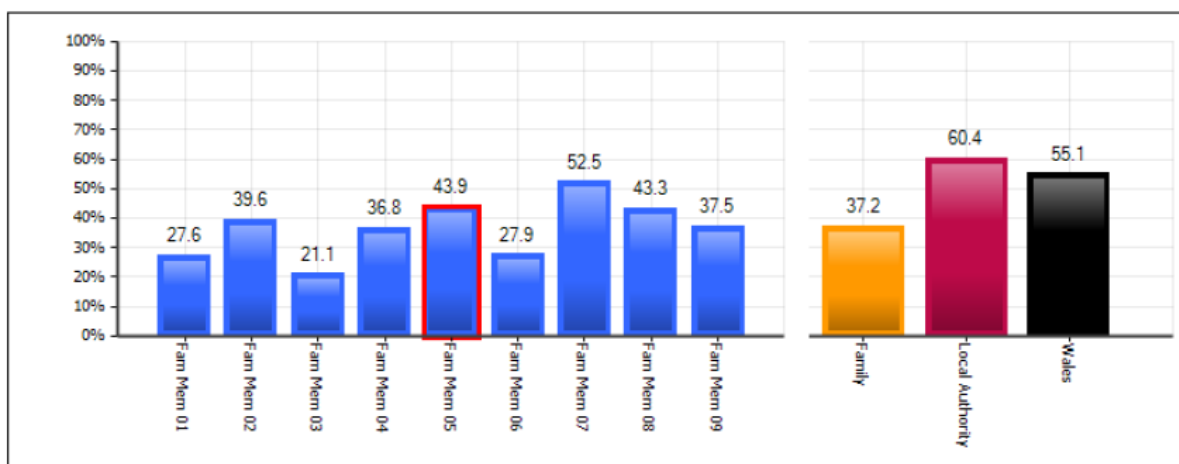
### 0.1 - Comparisons against modelled outcomes based on FSM eligibility

#### 0.1a Family comparison - % of Year 11 pupils achieving L2 inc E/W & M



It is also worth noting that we did much better than the family average and outperformed many schools in our family.

**1.1b** Family comparison



Also as the diagram below shows (school results between the yellow bands) there are many strengths within departments.

	Number of schools	Minimum	Lower Quartile	Median	Upper Quartile	Maximum
Level 1 Threshold	16	85	90	94	99	100
Level 2 Threshold	16	32	44	51	59	63
Level 2 Threshold including English/W	16	21	34	39	44	48
Average Capped Wider Points Score	16	252	274	286	311	354
Average Capped 9 Points Score	16	272	296	312	339	379
Welsh Baccalaureate National	16	18	29	34	42	45
Skills Challenge Certificate National	16	35	50	59	68	91
A*-C in GCSE English	16	30	38	47	55	73
A*-C in GCSE Mathematics (best of)	16	36	44	51	55	67
A*-C in GCSE Mathematics	16	34	38	45	52	60
A*-C in GCSE Mathematics - Numerac	16	26	37	41	47	61

Level 2 Threshold Including English and Maths (Wales Benchmarking)

- School in the upper quartile and performed better than all similar local schools
- School in the middle and upper quartile for the last 5 years

Level 2 Threshold (Wales Benchmarking)

- School above the median and performed better than all similar local schools

Skill Challenge and Welsh Baccalaureate (Wales Benchmarking)

- School above median and performed better than all similar local schools

Mathematics and Numeracy (65% A\* to C 2018 and 62% A\* to C 2017)

- School outperformed all similar schools for 2 years in a row
- Schools in the middle and upper quartile for the last 5 years

5A\* to A average for the last 5 years (12%)

- School performed better than similar schools in the area over the last 5 years



## Provision for Sport

The football and rugby seasons are now up and running and the cup competitions are in full flow. Year 7 have enjoyed success in the Cardiff Football cup with a well fought 1-0 victory against Cardiff West and now face Eastern High School in the second round. Despite some valiant performances, years 8, 9 and 10 all fell at the first hurdle in their first round matches. Team of the moment are the Year 11 team. After a comprehensive 3-1 first round win against Bishop of Llandaff, they have just progressed to the quarter final stage of the Cardiff Cup following an emphatic 4-0 victory against Cardiff High! This was a complete team performance where the opposition team manager admitted that his team had been comprehensively beaten. Well done to all involved.



With regards the rugby cup, first round matches are due to take place over the next couple of weeks and the teams are confident of progressing in to the second round. Year 7 have a home draw to St John's College whereas Years 8 and 9 have first round ties against Kings Monkton.

With regards individual success, Y7 Zain Jhagier has just been selected to play in the Cardiff and Vale of Glamorgan U12 cricket squad. He plays for Radyr Cricket club and recently progressed through trials at the SWALEC stadium. Well done Zain!

There has been a variety of extra-curricular activities taking place this term but all clubs would welcome new members. Every Wednesday 3-4pm there is a girls football session in the barn which is attended by a few committed pupils but they require more players so that they can play some games in the New Year.

Every Thursday there is a boys and girls basketball club which is growing every week but once again more players are needed so that fixtures can be arranged.

The biggest success this term has been the large number of girls attending the Inner Strength programme at the Star Hub every Friday 3.30-5.30pm. The girls have a fitness session which involves a mass warm up followed by a workout in the gym using state of the art cardio equipment, weights and medicine balls.



The second hour involves the girls taking part in workshop which aims to raise their self-esteem and understanding of a healthy lifestyle. Some of the themes have included healthy eating, self-harming and mental health, social media and body image. This project has been a collaboration between Willows High School, Sport Cardiff and the Star Hub and it is an excellent example of how a community can improve the health and wellbeing of young girls.

Inner Strength will continue to run in the New Year and Willows High School would like to thank Sport Cardiff for offering to fund the next ten sessions. The girls who have attended this club have shown great commitment and have had fun whilst improving their fitness and understanding of health.

In January, the Sports Hall Athletics season starts and the PE Department would like to send a full minibus to the championships, so training sessions will start in December and all pupils are welcome.

## Destination of School Leavers

Venue	Number of pupils	Percentage of Cohort
St David's College	26	29
ACT	19	21
CAVC	30	34
Employment	3	4
Cathays 6th Form	1	1
MPCT training	1	1
Pencoed College	1	1
St Teilo's 6th Form	1	1
ITEC Barbering	1	1
Weybridge College	1	1
Cardiff City Academy	2	2
Not in Education, Employment or Training	3	4

# Full Financial Statement

	Governor Approved Budget/ Cyllideb a Gymeradwywyd gan y Llywodraethwyr		Actual Expenditure/ Gwariant Cyflawnedig	
	£	£	£	£
<b>Staffing costs/Costau Staff</b>				
Teaching Costs/Costau Addysgu	2,253,632		2,211,185	
Special Needs Teachers/Athrawon Anghenion Arbennig	0		0	
Teachers for statemented pupils/Athrawon ar gyfer disgyblon sy'n destun datganiad	0		0	
Short Term Supply/Lianw Byr Dymor	0		44,577	
Long Term Supply/Lianw Hir Dymor	62,076		40,927	
Special Needs Support Staff/Staff Cymorth Anghenion Arbennig	0		541	
Nursery Assts/ Teachers Aides / Adult Helpers/Cynorthwyyr Meithrinfa/ Cymhorthion Athrawon / Cynorthwyyr	352,234		316,939	
Foreign Language Assistants/Cynorthwyyr Ieithoedd Tramor	0		0	
Technicians/Technegwyr	78,510		66,813	
Mid Day Supervisors/Gorychwylywyr Canol Dydd	0		0	
Library Staff / Attend Officer/Staff Llyfrgell / Swyddog Presenoldb	105,916		104,003	
Administrative Staff/Staff Gweinyddol	146,305		146,821	
Non teaching supply costs/Costau llanw staff heb fod yn athrawon	0		0	
Training Costs/Costau hyfforddi	30,000		36,673	
Other Staff Costs/Costau staff eraill	110,120		158,681	
Performance Management/Rheoli Perfformiad	0		0	
<b>Total Staffing Costs/Cyfanswm Costau Staff</b>		3,138,793		3,127,161
<b>Premises Related Costs/Costau Eiddo</b>				
Caretaking Staff/Staff Gofalwyr	66,226		97,641	
Domestic Staff/Staff Domestig	81,617		86,824	
Grounds Staff/Staff y Tir	9,400		6,750	
Cleaning Costs/Costau Glinhau	132,445		137,717	
Energy Costs/Costau Ynni	87,550		65,541	
Rates/Cyfraddau	66,866		66,866	
Repairs and Maintenance/Atgyweiriau a Chynhaliath	37,031		34,595	
Water/Dŵr	6,000		7,334	
<b>Total Premises Related Costs/Cyfanswm Costau Eiddo</b>		487,135		503,267
<b>Transport Costs/Costau Cludiant</b>				
Pupil Transport Costs/Costau Cludiant Disgyblon	0		0	
Staff Transport Costs/Costau Cludiant Staff	800		269	
Vehicle Costs/Costau Cerbydau	4,150		3,022	
<b>Total Transport Costs/Cyfanswm Costau Cludiant</b>		4,950		3,291
<b>Supplies and Services/Cyflenwadau a Gwasanaethau</b>				
Teaching Materials/Adnoddau Addysgu	100,000		96,159	
Equipment, Furniture, Materials & music tuition/Offet, Dodrefn, Deunyddiau a hyfforddiant cerddoriaeth	15,000		13,153	
Library Books & Materials/Lyfrau a Deunyddiau Llyfrgell	4,500		3,187	
Catering Costs/Costau Artwyo	3,000		73,653	
Unallocated / Savings to be found/Arian heb ei ddosbarthu / Cynllon	-124,905		0	
Communications Equipment and Services/Offet a Gwasanaethau Cyfathrebu	67,500		61,218	
Consultants Fees/Floedd Ymgynghorwyr	0		0	
Examinations Fees/Floedd Arholiadau	90,000		63,493	
Games & School Activities/Gemau a Gweithgareddau Ysgol	1,000		581	
Clerk to Governing Body/Clerc y Corff Llywodraethu	1,980		1,763	
Other office costs/Costau swyddfa eraill	48,568		41,836	
Printing & Stationery/Argraffu a Deunydd Ysgrifennu	28,000		32,551	
Pupil Exclusions/Gwaharddiadau Disgyblon	1,000		0	
Subsistence and expenses/Cynhaliath a threuliau	0		0	
<b>Total Supplies and Services/Cyfanswm Cyflenwadau a Gwasanaethau</b>		235,643		387,594
<b>Central Services/Gwasanaethau Canolog</b>				
School Meals/Prydau Ysgol	119,400		119,400	
Service Level Agreements/Trefniadau Lefel Gwasanaeth	33,684		35,796	
<b>Total for Central Services/Cyfanswm ar gyfer Gwasanaethau Canolog</b>		153,084		155,196
<b>Income/Incwm</b>				
Additional Central Funding/Nawdd Canolog Ychwanegol	-380,795		-24,901	
Community Education/Addysg Cymunedol	0		0	
Donations/Rhodion	0		-17,038	
Lettings/Gosodiadau	-30,000		-11,677	
Other Income/Incwm arall	-80,000		-103,529	
Grant Income/Incwm rhent	0		-389,311	
Sales/Gwerthiannau	-81,394		-97,930	
School Meals Recharge/Talu am Brydau Ysgol	0		0	
Training and Tuition Income/Incwm Hyfforddiant	0		-7,486	
<b>Total Income/Cyfanswm Incwm</b>		-572,189		-652,073
Interest and Other/Llog ac Arall				
Interest on investments/Llog ar fuddsoddiadau	0		0	
School Investments/Buddsoddiadau Ysgol	0		0	
Withdrawal Investments/Buddsoddiadau Dileadau	0		0	
School Deficit/Gwariant Ysgol				
Temporary Loans/Benthyciadau Dros Dro	0		0	
Temporary Loans/Benthyciadau Dros Dro	0		0	
Interest/Llog	-3,206		-3,155	
<b>Total Interest and Other/Cyfanswm Llog ac arall</b>		-3,206		-3,155
<b>Total Net Expenditure/Cyfanswm Gwariant Net</b>		3,444,210		3,521,280
Less Uninvested Balance Brought Forward/Llai'r Balans na fuddsoddiwyd a ddygwyd ymlaen		-134,820		
Less earmarked Rates/Llai'r Cyfraddau a glustnodwyd		-66,866		-66,866
Contribution to / from balances/Cyfraniad i / o falansys				-211,890
<b>Revised Net Expenditure/Gwariant Net Diwygiedig</b>		<b>3,242,524</b>		<b>3,242,524</b>

## Steps taken by the Governing Body to strengthen links with the community

### Learning Lounge

2018 has been another successful year for the Learning Lounge where we continue to grow and flourish. The Learning Lounge is now a well-used and well-known place within our community which we hope to continue to grow with your support. This success has been recognised and rewarded with not one, but two awards this year! We were firstly awarded with our Investors in Families award earlier in the year, which is a three-year accreditation for the high level of services we offer to families and our local community. More recently we have won an award for our work with ADHD Cardiff, who successfully nominated us after the joint work we have done, both in parent training and supporting our own pupils.

We have held an array of courses over the year which have helped people gain new skills, for example, DIY for beginners and basic cake decorating, right through to level 3 accredited courses such as our Teaching Assistants course, where 21 people qualified and of which fourteen now have employment. All of our courses and workshops are free to attend and open to anyone in our community (you don't need to be related to a pupil), however booking is advisable. From January our timetable looks like:

	AM	PM	After school
Mon	DIY with Faye	An Introduction to the Role of a Teaching Assistant	
Tues	Basic Maths Walking Group	IELTS	Girls group KS4
Wed	Basic Maths	Driving theory test practice sessions	An Introduction to the Role of a School Governor 6-8pm
Thurs	Flying Start Grow Baby/PNP	Job Club with Communities For Work	Girls Group KS3
Fri	Meet the Department/Head	Reach Drop-in Live Life to the Full with CCHA Reach Team	

These courses are delivered in partnership with a number of different organisations who we continue to build strong links with. These include, Adult

Learning Cardiff, Cardiff and Vale College, Cardiff Met, Flying Start and many more.

We are continuing to build new partnerships with different organisations, who we feel will add value to what we can offer our learners and participants. This year our two newest partnerships are with Communities for Work, who run a drop in each Thursday afternoon 1-4pm, to offer support with benefit claims, job searches or support with accessing training or employment. The other organisation who we have recently partnered up with is the Reach Team at CCHA. This team are able to offer help, support and advice to those who are not yet ready to start looking for work but would like to fill their time with other things like getting out and about or meeting new people. The Reach team hold a drop-in session Fridays 11am-1pm, call in to see them to see what they have on offer.

Feedback from service users and tutors is very good. All say they feel comfortable in the Learning Lounge as a venue. Teaching staff are pleased with the resources which are available to them and learners say the environment is good for learning and the relaxed atmosphere make them feel at ease. All learners who are attending accredited courses this term are predicted to pass, and we currently have a 99.8% overall pass rate on every accredited course we have delivered. We have a number of learners who started with us last September on entry level courses and have spent the year moving through the level, these are now on accredited courses and are predicted good passes. We hope to see these students either continue onto a college course or into employment. This year we have a number of learners who have gone on to study higher level qualifications and more than 20 who have found employment after accessing courses or services in the Learning Lounge.

All courses which are delivered in the Learning Lounge have been chosen by the learners themselves. We often ask for feedback after short courses or run open consultation sessions, from which we take the feedback seriously and try our best to offer what is requested. If you have any courses, workshops or qualifications which you would like to see being delivered, please do let us know and we will do our best to arrange it.

### **Community Engagement**

A large part of what we want to achieve at Willows is to be able to offer community activities which are less formal than our learning strand and to be fully accessible to the whole community. Curry and Bingo nights have been popular and have been thoroughly enjoyed by all who attend. Just recently we have had the pleasure of hosting our first 'Comedy' bingo, with the wonderfully funny Mike Bubbins as our caller. This saw the whole community

come together and enjoy a great night of bingo, comedy and laughter. We hope to run more bingo nights in the New Year and it would be great to see you there!

Last month we saw the second annual Bonfire Extravaganza, to which over 3000 people came along to enjoy. The feedback has been really positive and everyone had a great time. We would like to thank all of our sponsors for their kind donations towards this event, without them we would not be able to offer such a spectacular evening- United Welsh, Cardiff and Vale College, FCHA, Four Walls, Tesco Bags of Help, STAR Communities First and Adamsdown Legacy Fund, Celca and Jewsons, Newport Rd. We would also like to thank our huge army of volunteers who helped out at the event and to Keep Splott Tidy for their efforts the following morning for the big tidy up! All money raised at this event will go towards planning next year's event and subsidising family activities and trips throughout the coming year.

This year's trips have been full of excitement with lots of new places visited and cultural capital gained. In the summer we were lucky enough to be able to visit the Royal Mint followed by a trip to Barry Island. This was followed by a full day out just a few weeks later to Tenby. We had a great time playing on the beach, paddling in the sea and spending time shopping in the beautiful walled town centre. Our year of trips was nicely finished off with a visit to the stunning Bath Christmas Markets at the beginning of December. We were joined by staff and local families who all had a great time trying new foods and drink, shopping for hand-crafted gifts and of course trying the local mulled wine!

Here in our own community we have been getting busy at one of our local breakfast clubs. Pupils from Willows have been taking turns to help out at the Old Library Breakfast Club with Splott Community Volunteers on a Thursday morning. The club is open for anyone to come along and have a full and healthy breakfast for a minimal donation. The club is run by volunteers with kind donations of food from local producers and supermarkets. Pupils have been able to support the group and learn new skills in cooking and food preparation, meeting and greeting and in taking orders and serving the public. We've had great feedback from pupils who have taken part about how much they have enjoyed it, from the volunteers about how helpful and polite our pupils have been and from the service users on how seeing our pupils brightens up their day. This club runs from 8-10am every Thursday and there is also a second club on a Wednesday at the same time in Oasis. These are open sessions for anyone to come and join Splott Community Volunteers for a breakfast.

Here at Willows we want to embrace community spirit and togetherness and for our school to be at the heart of that. We would love to see new relationships form between neighbours, organisations and of course our own school families.

We want to join in community activities and start new ones of our own. We would like to introduce more community members to adult learning to enable them to better achieve or become work ready. It would be nice for parents to meet school staff in a very informal way, raise confidence and see better attendance at events such as parents' evenings. As such, this year we introduced our 'Meet the Department' sessions each Friday morning. This is where we are joined each week by a different Subject Leader to chat with parents about what's happening in their subject area. This is a great opportunity for parents to find out what their child is doing in particular subjects, ask questions and find out how you can better support your child with their school work. This is much more informal than parents' evening, we even have tea and toast! It allows you to stay longer and find out what you really want to know without worrying about a queue building up behind you. We are in the Learning Lounge each Friday from 9.15am, a list of dates is available on Facebook and Twitter. At the end of each half term we are also joined by Attendance Officers, Welfare Officers and Mr. Norman also has a 'Meet the Head' session for more generic school information and consultation.

### **Friends of Willow High**

Friends of Willows High has been slow to get off the ground this year and we are currently looking for more volunteers to join the group. The group meets once each half term for an hour to discuss and make plans for fundraising activities. In the past the group has run the summer and Christmas Fayres and been able to support pupils with the money they have raised to attend educational trips and activities.

We are currently trying to re-establish the group under a new constitution so we can move forward with our application for charity status. This will then allow the group to apply for larger pots of money to run bigger and more exciting and beneficial projects. If you are interested in joining or would like more information, please do contact us.

### **Professional groups**

Our Family and Community Engagement Officer, Nat, currently represents the school on a number of community and professional groups and is able to use the information and knowledge gained to support and strengthen her role as FACE officer:



YAG- The Youth Action Group which meets monthly and looks at activities and accessibility for young people and how we can better support them as a collective, in school and the community to keep them engaged and Anti-Social Behaviour low. Through the sharing of knowledge and resources a number of activities are made available to young people along with support for their families.

PING- A professional focus group looking at risks surrounding and prevention of Child Sexual Exploitation for young people. This groups meet quarterly and shares resources and professional knowledge. It offers support to young people and their families as well as looking at how to keep our communities, both school and wider, safe for young people and to limit exposure through awareness raising and safeguarding.

Cluster Parental Engagement Officers- Each of our feeder primary schools now has a FACE officer, all of which do a very similar role, but in isolation in their own school. Nat co-ordinates a half termly meeting to bring the officers together to share good practice, offer support and to work more on cluster based activities. We have been able to share in time credit activities, offer places to each other's parents on adult learning courses and are currently looking to plan a cluster engagement trip for families from different schools to come together. These meetings have been beneficial to each of the schools which attend and offer ongoing support to one and other.

### **Looking ahead to 2019.....**

There's lots to come in the New Year in the Learning Lounge. There will be exciting new courses each term. We hope to book more community trips and perhaps a family visit to a University Campus. We are excited about getting the Friends Of Willows group up and running again and securing the charity status and will be continuing to support community groups, including the breakfast clubs.

Look out for more events being planned in the run up to spring. We are hoping to have another bingo event, bring back Family Cinema Club and introduce lots of new activities. If there's a group you attend, or something running which you think we might want to come along to, please do let us know we would love to hear your ideas.

You can find all of our activities on the Willows Official Facebook page or on the Learning Lounge Twitter page: @learnloungewhs . We would be delighted to see you there!

## Term Dates

Term 1 (Sep-Oct 2018)	3 September	26 October
Term 2 (Nov-Dec 2018)	5 November	21 December
Term 3 (Jan-Feb 2019)	7 January	22 February
Term 4 (Mar-Apr 2019)	4 March	12 April
Term 5 (Apr-May 2019)	29 April	24 May
Term 6 (Jun-July 2019)	3 June	22 July

## INSET Days

Monday 3<sup>rd</sup> September

Tuesday 4<sup>th</sup> September

Friday 21<sup>st</sup> December

Monday 3<sup>rd</sup> May

Monday 22<sup>nd</sup> July

## Summary of changes to school prospectus

- Photography will now be taught in Year 9.
- Science is combined in Journey 7 this year.
- Kelly Bubbins was appointed as Deputy Headteacher.

## The use of Welsh language in the school by pupils of all age groups

### Teaching of the Welsh language

How pupils are taught	Year				
	7	8	9	10	11
Taught Welsh as a first language	0	0	0	0	0
Taught Welsh as a second language	143	135	146	89	112
Disapplied from curriculum by SEN statement	0	0	0	0	0
Total	143	135	146	89	112

### Home/spoken Welsh language

Age	Speak Welsh fluently at home	Do not speak Welsh at home but are fluent	Speak Welsh at home but not fluently	Does not speak Welsh at home and not fluent	Cannot speak Welsh
15	0	0	0	5	107
14	0	0	0	10	79
13	0	0	0	6	140
12	0	0	0	2	133
11	1	0	0	3	139

The number of foundation subjects taught consistently and entirely through the medium of Welsh or bilingually = 0

## Language Categories

The following table shows the distribution of languages that pupils speak in the school:

First Language	Number of pupils aged 5 or over at 31 August 2017
Albanian/Shqip	1
Arabic	25
Arabic (Any Other)	1
Arabic (Sudan)	2
Bengali	2
Bengali (Any Other)	8
Bengali (Sylheti)	14
Chinese (Mandarin/Putonghua)	1
Czech	25
English and/or Welsh/Cymraeg	372
French	4
Fula/Fulfulde-Pulaar	1
Greek	1
Gujarati	1
Hindi	1
Kurdish	2
Lithuanian	1
Manding/Mandekan (Any Other)	1
Ndebele	1
Nepali	1
Panjabi	2
Persian (Dari)	4
Persian/Farsi	3
Polish	4
Portuguese	13
Romanian	6
Romanian (Romania)	2
Russian	1
Shona	1
Slovak	5
Somali	28
Spanish	2
Swahili (Bajuni/Tikuu)	1
Swahili/Kiswahili	1
Tamil	2
Tigrinya	1
Urdu	12
Vietnamese	1

## **School Toilet Facilities**

Pupil toilets are located in the canteen (with disability provision), Isolation room, Welfare Office, opposite the meeting room (with disability provision), Astro turf changing rooms (with disability provision) and PE changing rooms (with disability provision).

Staff toilets are located top floor (with disability provision), first floor (with disability provision) and the ground floor (with disability provision).

All toilets are cleaned at the end of the school day and checked regularly during the school day.